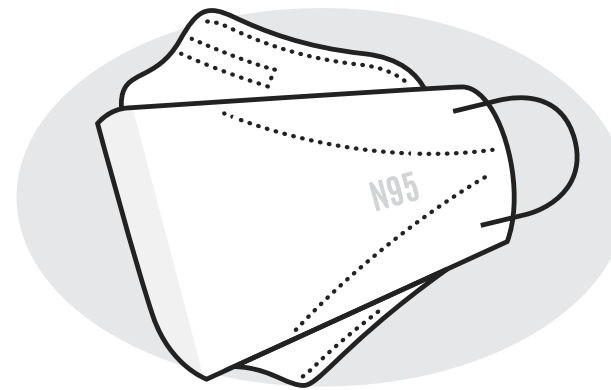


On campus?

**MASKS** are required

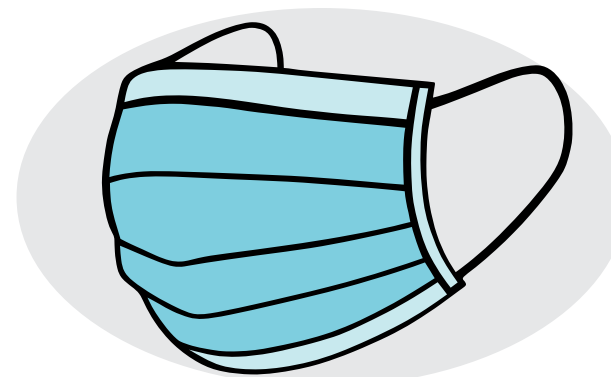
**+ NAME BADGE**

HIGHLY RECOMMENDED to wear a KN95, N95 or KF94 mask. These masks are made with filtering material that traps up to 95 percent of particles.



**-OR-**

Wear surgical masks, which are widely available on the TCC campus (pick them up at building lobby areas). Surgical masks contain an iodine filter that blocks out particles. Wear two surgical masks for best safety practices.



Cloth masks are not recommended.



To care for your KN95, N95 or KF94 masks\*:

- Get four masks and four small brown paper lunch bags.
- Store your mask after a daily wearing in the lunch bag. It takes about four days to sanitize your mask in a dry, sterile environment.
- Repeat the same steps with the other masks.

\*Source: Juang & Tsai, 2020: <https://doi.org/10.1016/j.jemermed.2020.04.036>

Name badges are required on campus.

This tells us you have self-attested your vaccination status or received an approved exemption.

- Forgot your badge? Check in at Bldg. 14 and get a wrist band.
- Lost your badge? Pick one up at Bldg. 14.
- Did not self-attest? Check in at Bldg. 14.

